



FOUR SEASONS
YACHTS



A NEW EXPERIENCE
AT SEA

GROUPS AND PRIVATE CHARTERS



INTRODUCING

GROUPS & *PRIVATE CHARTERS*

From special-occasion charters to dreamy weddings to corporate retreats, Four Seasons Yachts offers the opportunity to host bespoke gatherings and celebrations aboard a magnificent vessel. With endless options for customization, guests can make the most of their stay aboard, whether through personalized spa experiences, curated group activities, unforgettable receptions, or tailored communications.

Our shoreside and onboard teams are dedicated to coordinating with or on behalf of group leaders, ensuring a seamless experience on voyages to some of the world's most stunning yachting destinations.



EXPERIENCE *THE DIFFERENCE*

Four Seasons unrivalled service culture is at the heart of every voyage. Our one-to-one staff-to-guest ratio enables us to create meaningful memories aboard through personalized attention and care. You'll also discover a trove of thoughtful amenities, services, and considerations unique to Four Seasons Yachts.

- Each suite boasts a private terrace, ranging from 64 to 4,917 square feet (6 to 457 square metres), with floor-to-ceiling windows offering panoramic sea views.
- Signature Suites range from two to three bedrooms across multiple deck levels, with expansive private terraces complete with splash pools and loungers.
- Accommodations can be connected vertically or horizontally, offering various configurations to expand the suites living space.
- Our one-of-a-kind Transverse Marina provides direct access to watersports and other activities on Marina Days.
- Guests enjoy a variety of daily activities, entertainment, and enriching experiences for every age group, as well as high-speed Wi-Fi.
- 11 onboard restaurants and lounges beckon with tantalizing global fare, crafted cocktails, and an exquisite selection of spirits and wines.
- Our voyages allow guests to explore the world's wonders by yacht, visiting iconic isles, and discovering remote locales in the Mediterranean, Caribbean, and Bahamas.
- For those seeking the ultimate in exclusivity, full yacht charters are available. This option allows for an entirely exclusive experience, where guests can curate every moment of their journey.
- Voyage fares are presented on a per-suite basis, accommodating the maximum number of guests as specified for each suite category, with all taxes and port fees included.



THE ONBOARD *EXPERIENCE*

In addition to our daily programmed onboard activities, we offer the option to curate custom experiences exclusive to your party. These can range from group exercise workshops to sommelier-led wine tastings, cocktail classes, and cigar and chocolate pairings.

Our team can also arrange private receptions to mark special occasions, offering multiple venues with flexible time slots. Gatherings can also be enhanced with signature beverages, bespoke menus, and other original touches.



Elevate group experiences aboard our yacht by opting for private events, from brunches, lunches, or dinners at one of our dining venues, to festive wedding receptions, family reunions, or celebratory gatherings exclusive to you and your guests. We can also offer access to private meeting spaces to suit your group's specific needs.



EXPERIENCE ENHANCEMENTS INCLUDE:

- Private venue options
- Personalized culinary and beverage menus
- Bespoke furniture arrangements
- Exclusive spa offerings
- Curated entertainment



FULL YACHT PRIVATE CHARTER

A full yacht private charter with Four Seasons Yachts grants complete freedom to customize every aspect of your journey, from your itinerary to onshore experiences and nearly every detail onboard. Our event planners can transform the yacht's venues to suit your needs or vision, whether you're joining us for a large-scale family escape or a special occasion celebration.



EXCEPTIONAL *DINING*

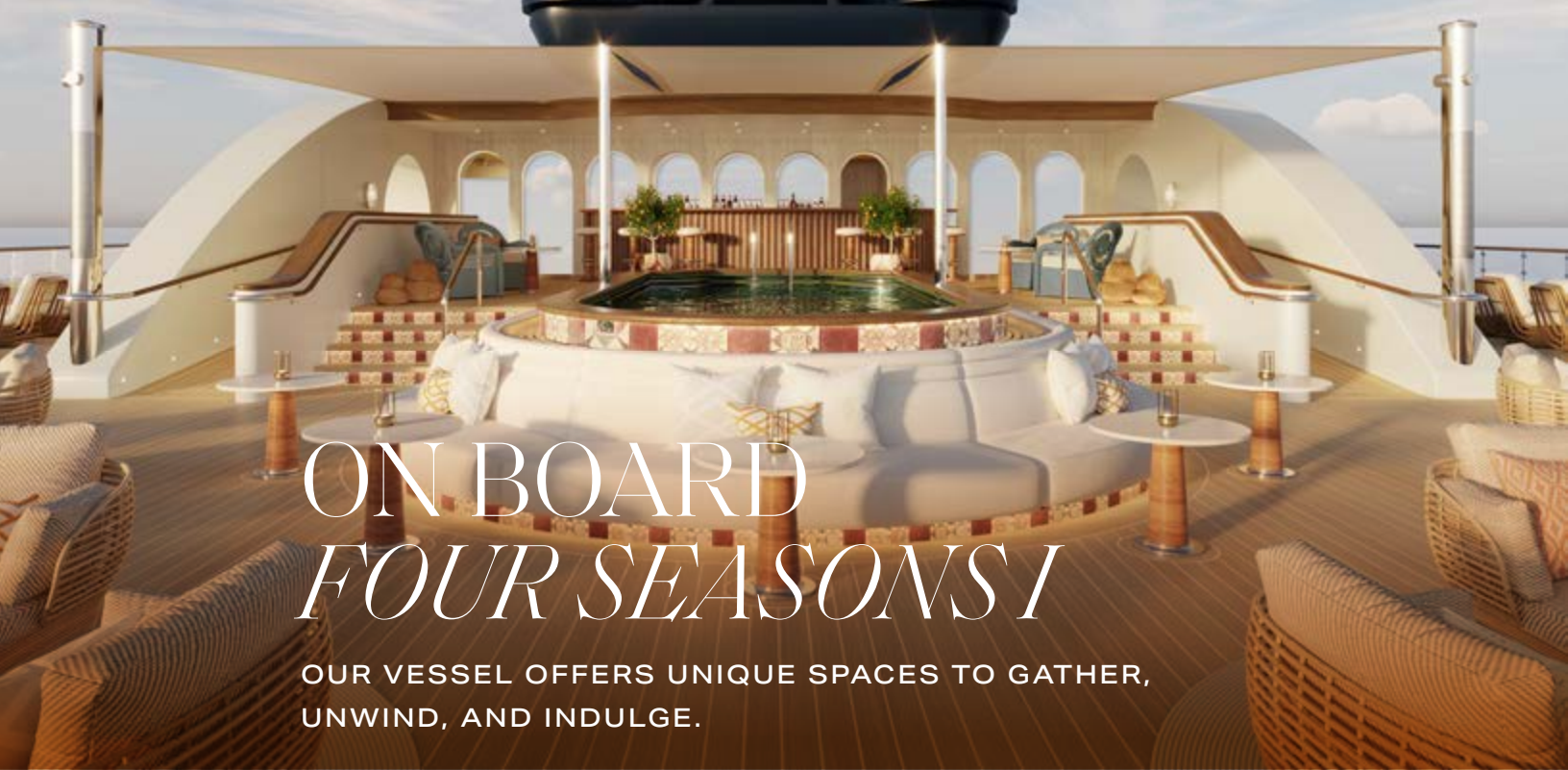
SAVOUR GLOBAL FLAVOURS IN UNFORGETTABLE SETTINGS



Extraordinary dining is a cornerstone of group experiences onboard our yacht. Many of our restaurants can easily accommodate tables for four to eight guests, with no need for prior arrangement.

For larger groups wishing to dine together spontaneously, we accommodate by seating guests at different times or providing alternatives across multiple venues as available.

When groups exceed 20 guests at a time, we will curate a set menu, allowing our culinary and front-of-house teams to provide an exceptional experience. Venue privatization and buyout possibilities can also be arranged ahead of voyages.



ON BOARD FOUR SEASONS

OUR VESSEL OFFERS UNIQUE SPACES TO GATHER,
UNWIND, AND INDULGE.

DECK 11

Lounge: Savour Moroccan-inspired fare al fresco, in a serene, adults-only lounge, with relaxing music, and light bites. *Available afternoon to night.*

TOTAL SPACE	5,941 ft² (552 m²)
Seating Capacity:	64
Standing Capacity:	40
Private Reception	

DECK 6

Craft Cocktail Bar: Sample rare vintage spirits, signature martinis, and expertly crafted drinks at a bar inspired by Europe's gilded cocktail scene of the 1960s. *Available afternoon to late night.*

TOTAL SPACE	969 ft² (90 m²)
Seating Capacity:	36

DECK 6

Lounge: Enjoy caviar paired with sunset views and the finest champagne at an outdoor, adults-only lounge. Available afternoon to evening. *Private reception available before 4pm.*

TOTAL SPACE	1,453 ft² (135 m²)
Seating Capacity:	44
Standing Capacity:	20-30

DECK 6

Fine Dining Restaurant: Our hallmark dining venue, featuring a revolving roster of accoladed Four Seasons chefs and expert sommelier-driven pairings, celebrates culinary excellence. *Available for lunch (sea days only), and dinner.*

TOTAL SPACE	2,799 ft² (260 m²)
Seating Capacity:	66
Group Seating Capacity:	30 Lunch only 20 Dinner
(note: tables and banquettes are fixed; not conducive to communal dining)	

DECK 6

Pool Bar: Poolside, you'll find a curated selection of cocktails, wines, and bubbles that complement simple bites for sun-drenched days. *Available all day.*

TOTAL SPACE	2,099 ft² (195 m²)
Seating Capacity:	92
Group Seating Capacity:	30
Standing Capacity:	50 (Charter groups only; pool must be elevated)
	30 (Charter groups only; pool not elevate)



DECK 5

Salon: Home to the central salon, where you'll find lounge bites, afternoon tea, signature wines, and pre- and post- dinner cocktails. *Available all day.*

TOTAL SPACE	1,776 ft² (165 m²)
Seating Capacity:	59

DECK 5

Restaurant: Enjoy local ingredients of the Mediterranean savouring vibrant flavours in an indoor and outdoor setting. *Available for breakfast, lunch, and dinner.*

TOTAL SPACE	1,884 ft² (175 m²)
Seating Capacity:	104
Group Seating Capacity:	40
Standing Capacity:	30
Private reception (after 7pm).	

DECK 5

Coffee Shop: A chic bakery tempts all day with fresh-baked pastries, light snacks, and gourmet coffees and teas. *Available for all-day coffee, tea, and snacks.*

TOTAL SPACE	322 ft² (30 m²)
Seating Capacity:	6

DECK 5

Sushi Omakase Restaurant: An intimate omakase experience with an evolving lunch and dinner menu that spotlights fine seasonal seafood paired with signature sake and teas. Available for lunch (sea days only), and dinner, private charter only.

TOTAL SPACE	624 ft² (58 m²)
Seating Capacity:	16
Charter Group Seating Capacity:	: 16
Standing Capacity:	15 (charter groups only)

MEETING ROOM CONFIGURATIONS	LOCATION	CAPACITY	CONFIGURATION
The Stage	Deck 4	60	Boardroom, Classroom, Cocktail
Grand Stair Atrium	Deck 4	20-30	Meeting break stations only
Pool Deck*	Deck 5	50 (pool must be elevated) 30 (pool not elevated)	Cocktail
Lounge	Deck 11	40	Cocktail

*Note: The Pool deck is only available for Charter group bookings during the day.

UNWIND IN STYLE

YOUR SPACIOUS *SANCTUARY*





Loft Suite private terrace, where sky meets sea

YOUR SUITE ESCAPE

LUXURY MEETS *SERENITY*

A new level of yachting style and comfort, your home at sea is a sanctuary of all-suite, residential-style accommodations. Each expansive suite has been meticulously designed for an unmatched sea-to-sky aesthetic that is nothing short of extraordinary.

Choose from a diverse range of luxurious accommodations, from over 500 to nearly 10,000 total square feet (46 to 929 total square metres)—setting a new benchmark as the largest of its kind. With the highest ratio of space-per-guest at sea, each well-appointed suite is nearly double the size of others in our class, ensuring you enjoy the ultimate in comfort, privacy, and sophistication.



Seamless connectivity, unlock suite possibilities

Along with floor-to-ceiling windows, each of our 95 suites boasts private terraces with indoor-outdoor panoramic sea views; spa-inspired, double vanity bathrooms; a walk-in closet; and an abundance of voyage-enhancing amenities. For added convenience, 12 suites also offer adjoining quarters for personal staff, children, and office space—the first of their kind.

THE SIGNATURE SUITE DIFFERENCE

Guests in Signature Suites enjoy the largest and most exclusive accommodations. Ranging from two to three bedrooms across multiple deck levels, each exquisite suite offers floor-to-ceiling ocean views, an expansive private terrace with splash pool and loungers, ample room to entertain, and other exceptional Four Seasons amenities.



Expand your view with a connecting terrace

TAILORED TO PERFECTION

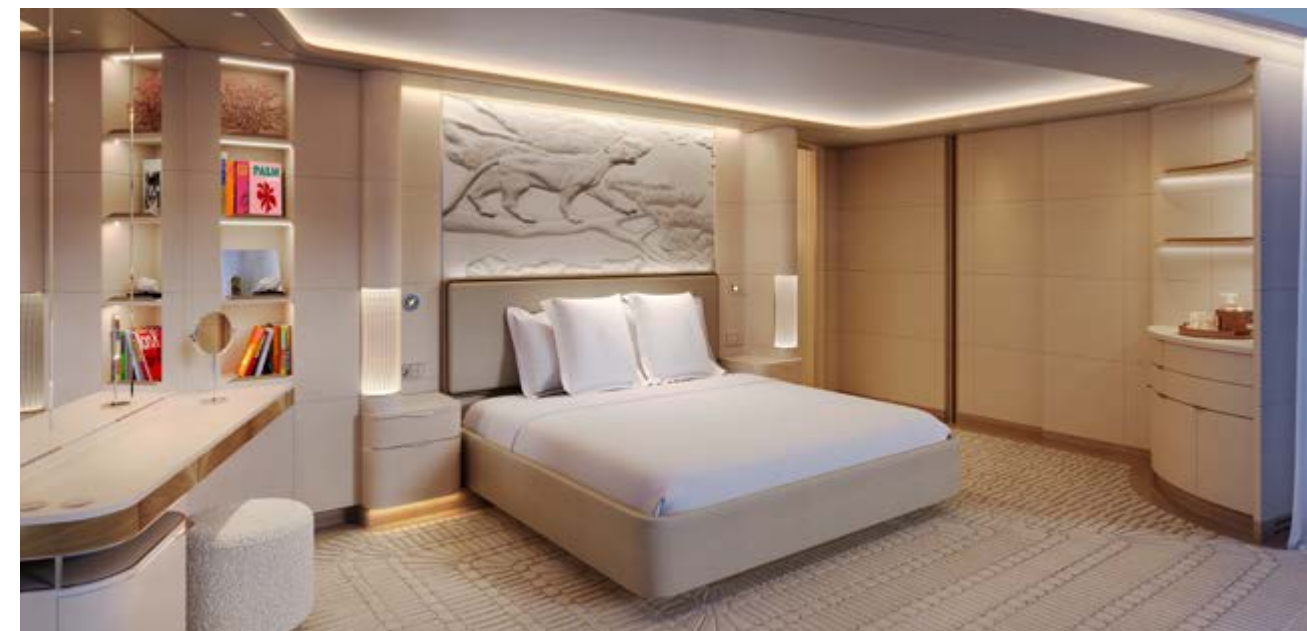
Your suite adapts to your vision, allowing you to select the one that precisely meets your needs—and for an unrivalled level of exclusivity, you may even custom-build your own accommodation space. Numerous suites connect vertically or horizontally to accommodate larger travelling parties, offering various configurations and full private deck add-ons to maximize space.



Elevated bliss: four stories of panoramic ocean vistas



Host in grandeur



One of the three expansive guest suites

SIGNATURE SUITE

FUNNEL

1
SUITE

Nestled within the yacht's glass-enclosed funnel, our largest, most exclusive suite offers uninterrupted sea vistas through panoramic, floor-to-ceiling windows. It boasts three bedrooms, each with walk-in closets, spread across four levels of opulent living space connected by a private elevator and staircase.

Indulge in a sunset dip in your private splash pool, maintain your fitness in your outdoor gym, and savour unforgettable meals prepared in your personal kitchen before dining al fresco on your sprawling terrace.



Luxury bathrooms

YOUR ACCOMMODATION

TOTAL SPACE | 9,975 ft² (927 m²)

Suite: 5,057 ft² (470 m²)

Terrace: 4,917 ft² (457 m²)

Occupancy: Five adults and one infant or one child*

Decks: 11, 12, 14, 15 FWD

Ability to connect with up to three additional suites.



Endless horizons with towering, wraparound windows spanning two levels



Elevated, three-bedroom comfort, each with walk-in closets



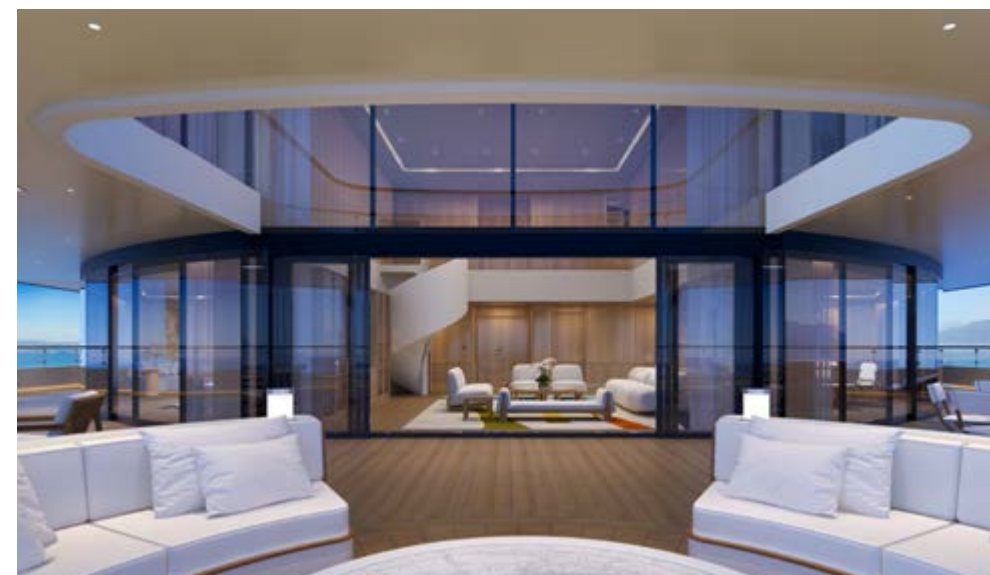
Three double vanity bathrooms

SIGNATURE SUITE

LOFT

1 SUITE

It's easy to feel at home in our Loft Suite, featuring three bedrooms, a private splash pool, and an outdoor gym. Relax in your personal sauna and steam room, gather for meals on your private terrace, and soak in endless views through wraparound windows that span two levels. For those travelling in a group, our Loft Suite can connect with up to seven neighbouring suites to accommodate up to 20 guests.



Elegant entertaining, signature style

YOUR ACCOMMODATION

TOTAL SPACE | **7,952 ft²** (739 m²)

Suite: 3,562 ft² (331 m²)

Terrace: 4,390 ft² (408 m²)

Occupancy: Six adults and one infant or one child*

Decks: 9, 10 AFT



Poolside lounge area and option to connect with one suite



Residential dining and living room area



Luxurious three-bedroom suites with walk-in closets

SIGNATURE SUITE

PORTOFINO

1
SUITE

Our aft-facing, three-bedroom Portofino Suite keeps you connected to the sea throughout your voyage. Watch the sunset in your private splash pool, enjoy dinner on your spacious terrace, and swap stories around your circular outdoor lounge.



Three marble-clad bathrooms

YOUR ACCOMMODATION

TOTAL SPACE | 4,219 ft² (392 m²)

Suite: 2,142 ft² (199 m²)

Terrace: 2,077 ft² (193 m²)

Occupancy: Six adults and one infant or one child*

Decks: 8 AFT

Ⓞ Adjoining personal staff studio available with connecting suite.



Captivating views and expansive space, each bedroom with walk-in closets



Dive into luxury on a private terrace



Indoor/outdoor living space and option to connect with up to three additional suites

SIGNATURE SUITE

MÁLAGA

1
SUITE

Our forward-facing Málaga Suite offers breathtaking ocean views from three tranquil bedrooms, a powder room, and three spa-like, marble bathrooms. A splash pool and outdoor dining table for six await on your expansive private terrace.



Bathe in pure marble elegance

YOUR ACCOMMODATION

TOTAL SPACE | 3,744 ft² (348 m²)

Suite: 2,055 ft² (191 m²)

Terrace: 1,689 ft² (157 m²)

Occupancy: Six adults and one infant or one child*

Deck: 7 FWD

Ⓞ Adjoining personal staff studio available with connecting suite.



Open-concept dining and living room, with indoor-outdoor spaces



Two sumptuous king-bed suites, each with walk-in closets



Outdoor terrace with pool and option to connect to three additional suites

SIGNATURE SUITE

SAINT-TROPEZ

1
SUITE

Watch the wake from the splash pool on your large private terrace, enjoy meals al fresco or from the comfort of your open-concept dining and living room, and unwind in two well-appointed bedrooms with marble bathrooms that feature soaking tubs and walk-in showers.



Two spacious bathrooms with walk-in showers and bath option

YOUR ACCOMMODATION

TOTAL SPACE | 4,207 ft² (391 m²)

Suite: 1,743 ft² (162 m²)

Terrace: 2,464 ft² (229 m²)

Occupancy: Four adults and one infant or one child*

Decks: 7 FWD

*A child is aged 12 years or under



One of two king-sized bed suites



Entertainment for all in your impressive living space



Private splash pool and option to connect to two additional suites

SIGNATURE SUITE

MILOS

1
SUITE

In our forward-facing Milos Suite, you'll enjoy captivating vistas from two spacious king bedrooms complete with marble bathrooms that feature a soaking tub and walk-in showers. Relax on your spacious terrace with its own private splash pool.



Luxuriate in two marble bathrooms, with bath and shower options

YOUR ACCOMMODATION

TOTAL SPACE | **3,153** ft² (293 m²)

Suite: 1,636 ft² (152 m²)

Terrace: 1,517 ft² (141 m²)

Occupancy: Four adults and one infant or one child*

Decks: 10 FWD

Ⓞ Adjoining personal staff studio available with connecting suite.

*A child is aged 12 years or under



Private terrace for day or night entertaining



Tranquil seclusion with breathtaking vistas



Seamless design for spacious living and dining

SIGNATURE SUITE

ST BARTHS

1
SUITE

Our two-bedroom St Barths Suite offers wraparound, forward-facing sea views, two well-appointed bedrooms, and two marble bathrooms with bathtubs and walk-in showers. A private terrace with a splash pool serves as the perfect place to dine or unwind.



Elevated spa-like high-end designer fixtures

YOUR ACCOMMODATION

TOTAL SPACE | 2,981 ft² (277 m²)

Suite: 1,582 ft² (147 m²)

Terrace: 1,399 ft² (130 m²)

Occupancy: Four adults and one infant or one child*

Decks: 8 FWD

Ⓞ Adjoining personal staff studio available with connecting suite.

*A child is aged 12 years or under



Shared, open spaces with ocean views



Seaside views and terrace tranquility

16
SUITES

GRAND OCEAN SUITES

Designed in an L-shape to maximize ocean views and outdoor space, our one-bedroom Grand Ocean Suites offer total comfort and privacy. Each features a spa-like double vanity bathroom with a soaking tub and walk-in shower, a powder room with a shower, a convertible sleeper sofa, and a large private terrace.

YOUR ACCOMMODATION

TOTAL SPACE | **1,012 to 1,140** ft² (94 to 106 m²)

Suite: 818 ft² (76 m²)

Terrace: 194 to 322 ft² (18 to 30 m²)

Occupancy: Three adults, or two adults and two children* with crib option for one infant

Decks: 7, 8, 9, 10



Luxurious oceanfront haven with walk-in closets



Spacious terrace, indoor and outdoor dining for four



Spa-like bathroom and powder room

15
SUITES

OCEAN SUITES

Our one-bedroom Ocean Suites are characterized by their expansive, floor-to-ceiling ocean views. All feature spa-like, double-vanity bathrooms with soaking tubs and walk-in showers, spacious living rooms, convertible sleeper sofa, and expansive private terraces.

YOUR ACCOMMODATION

TOTAL SPACE | **893 to 1,011** ft² (83 to 94 m²)

Suite: 764 ft² (71 m²)

Terrace: 129 to 247 ft² (12 to 23 m²)

Occupancy: Three adults, or two adults and two children* with crib option for one infant

Decks: 6, 7, 8, 9, 10

Ⓞ Options include one accessible suite and adjoining personal staff studio.



Dine in style, entertain in excellence



Luxury marble bathroom



Suite-adjacent personal staff studio



Unwind and socialise on a private terrace



Floor to ceiling views from private terrace

15
SUITES

SUPERIOR SEAVIEW SUITES

Our Superior Seaview Suites are easily convertible and can be requested with a king bed or split bed to best accommodate your needs. Each features a double-vanity bathroom with a soaking tub and walk-in shower and ample private terrace that yields captivating ocean views.

YOUR ACCOMMODATION

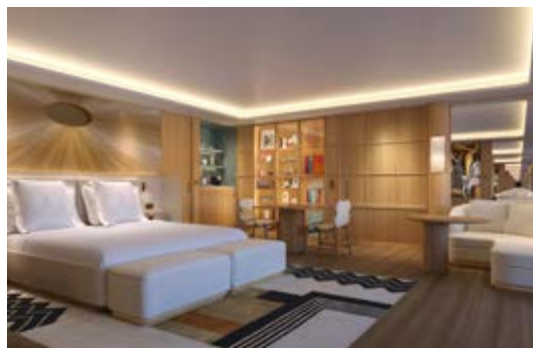
TOTAL SPACE	807 to 893 ft ² (75 to 83 m ²)
-------------	--

Suite: 710 ft² (66 m²)

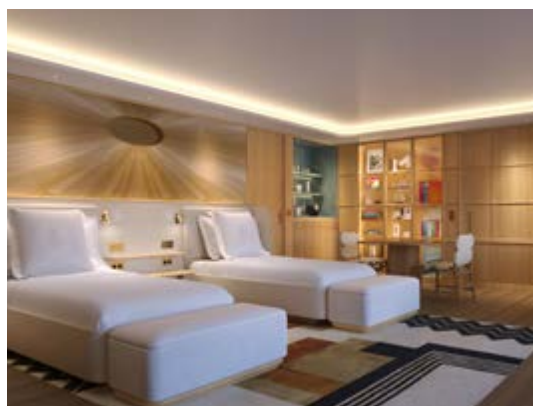
Terrace: 97 to 183 ft² (9 to 17 m²)

Occupancy Two adults and one infant or one child*

Decks: 7, 8, 9, 10



Captivating views & indoor dining table for two



King, double, or twin bed configuration



Double vanity bathroom with bathtub and walk-in shower

42
SUITES

SEAVIEW SUITES

Perfect for two, our Seaview Suites are beautiful ocean retreats. Recharge in a tranquil, spacious bedroom with a double-vanity marble bathroom and enjoy endless views from your private terrace.

YOUR ACCOMMODATION

TOTAL SPACE	537 to 613 ft ² (50 to 57 m ²)
-------------	--

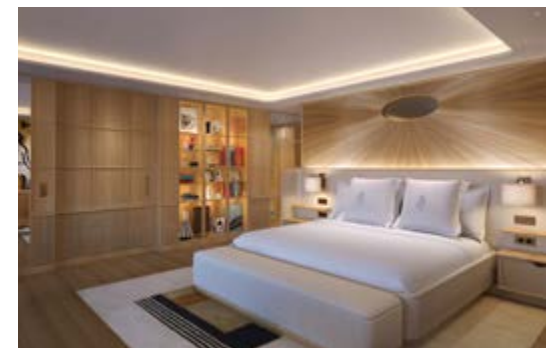
Suite: 473 ft² (44 m²)

Terrace: 64 to 140 ft² (6 to 13 m²)

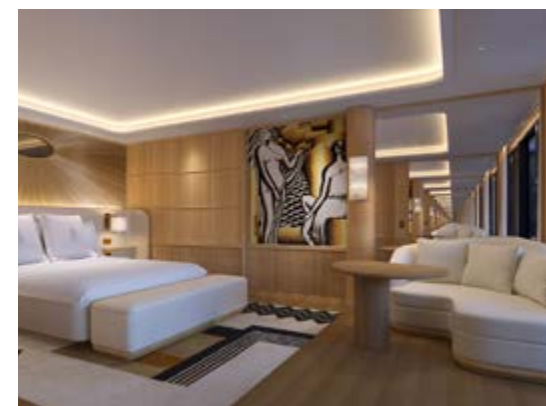
Occupancy Two adults, or two adults and one infant

Decks: 5, 6, 7, 8, 9, 10

Ⓞ Options include one accessible suite and adjoining personal staff studio.



Tranquil, spacious bedroom with a king bed



Endless possibilities to combine Seaview Suites



Double-vanity bathroom with shower

FIND YOUR NORTH STAR

NAVIGATE OUR *DECK PLANS*



FOUR SEASONS I

679 ft.
LENGTH

34,000
GROSS TONNAGE

95
SUITES

1:1
GUEST/STAFF RATIO

Our suites are the largest of their kind, offering guests an unparalleled retreat to relax or entertain in. Each features an expansive private terrace ranging from 64 to 4,917 square feet (6 to 457 square metres)—a perfect setting for private gatherings and intimate cocktail receptions.

What’s more, 12 suites feature separate multi-functional studio accommodations with separate entrances and private bathrooms that are seamlessly integrated with the primary suite. They were specifically designed with flexibility in mind to best accommodate guests’ needs, serving as an office, or an additional bedroom for children or travelling staff.

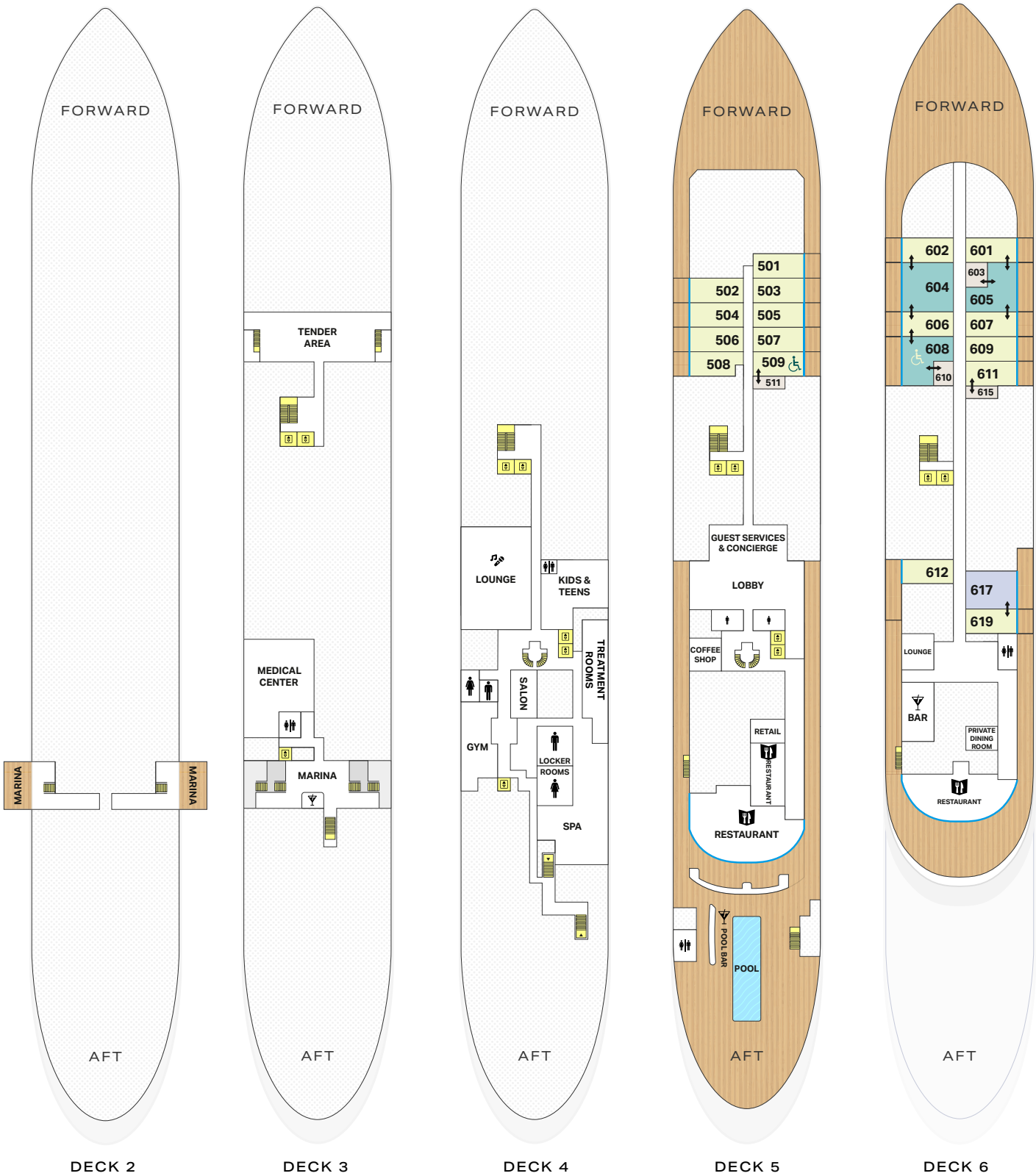
DECK	SUITE NAME & QUANTITY	OCCUPANCY	SQFT			BERTHS	KING BED QTY	TWIN BED QTY	SLEEPER SOFA
			SUITE	TERRACE	TOTAL				
11 - 14 MID	Funnel Suite (Qty: 1)	5 Adults & 1 Child	5,057	4,917	9,975	5 (Max: 6*)	2	1	n/a
9 - 10 AFT	Loft Suite (Qty: 1)	6 Adults & 1 Child	3,562	4,390	7,952	6 (Max: 7*)	3	n/a	n/a
8 AFT	Portofino Suite (Qty: 1)	6 Adults & 1 Child	2,142	2,077	4,219	6 (Max: 6*)	2	1	n/a
7 FWD	Málaga Suite (Qty: 1)	6 Adults & 1 Child	2,055	1,689	3,744	6 (Max: 6*)	2	2	n/a
7 AFT	Saint-Tropez Suite (Qty: 1)	4 Adults & 1 Child	1,743	2,464	4,207	4 (Max: 5*)	2	2	n/a
10 FWD	Milos Suite (Qty: 1)	4 Adults & 1 Child	1,636	1,517	3,153	4 (Max: 5*)	2	2	n/a
8 FWD	St Barths Suite (Qty: 1)	4 Adults & 1 Child	1,582	1,399	2,981	4 (Max: 5*)	2	n/a	n/a
7 - 10	Grand Ocean Suite (Qty: 16)	3 Adults or 2 Adults & with 2 Children with Infant Crib Option	818	194 - 322	1,012 - 1,140	2 (Max: 5)	1	n/a	1
6 - 10	Ocean Suite (Qty: 16)	3 Adults or 2 Adults & with 2 Children with Infant Crib	764	129 - 247	893 - 1,011	2 (Max: 5)	1	n/a	1
6	Ocean Accessible (Qty: 1)	2 Adults & 1 Child / Infant	764	247	1,011	2 (Max: 5)	1	n/a	1
6 - 10	Superior Seaview Suite (Qty: 15)	2 Adults & 1 Infant	710	97 - 183	807 - 893	2 (Max: 3)	1	Twin Bed Optional	n/a
5 - 10	Seaview Suite (Qty: 41)	2 Adults & 1 Infant	473	64 - 140	537 - 613	2 (Max: 3)	1	n/a	n/a
5	Seaview Accessible (Qty: 1)	2 Adults	473	140	613	2 (Max: 3)	1	n/a	n/a
5 - 10	PA Studio (Qty: 12)	1 - 2 Adults**	129	n/a	129	(Max: 2)	n/a	n/a	n/a

*Max berth includes ability for single rollaway bed for children aged 12 and under.
**Dependent on the PA Studio layout, some can accommodate up two guests.

FOUR SEASONS YACHTS

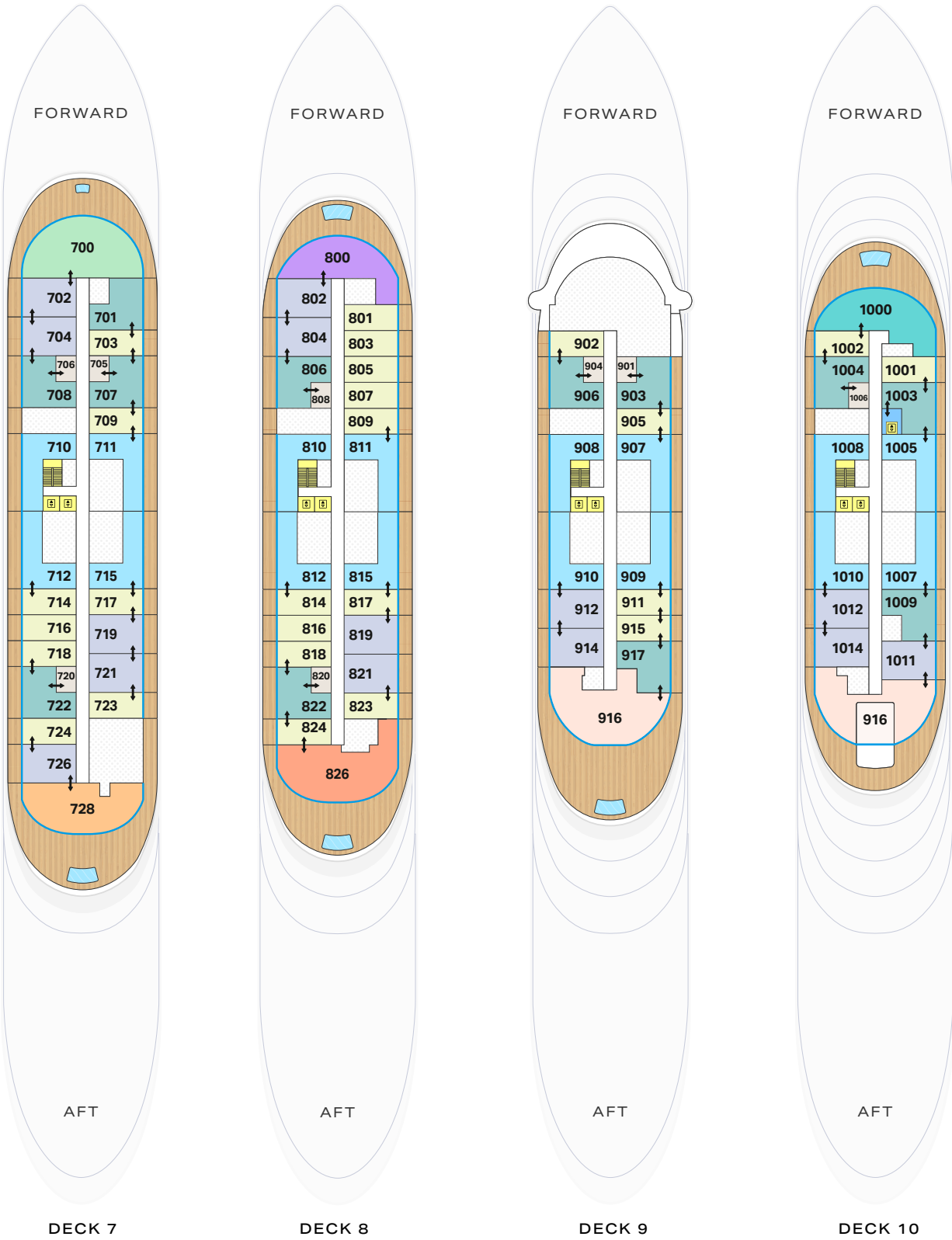
ACCOMMODATIONS

DECK PLANS



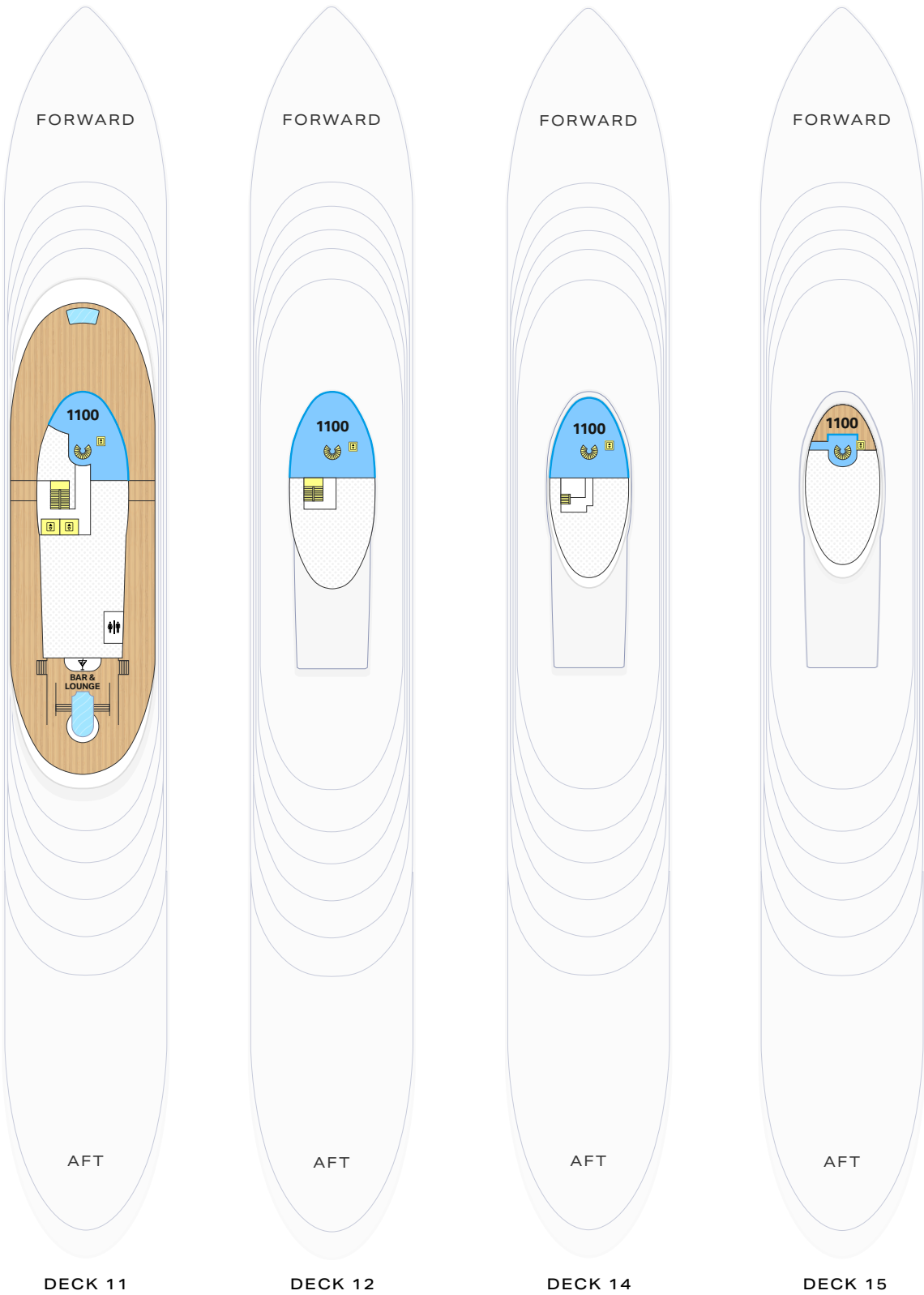
FOUR SEASONS YACHTS

ACCOMMODATIONS | DECK PLANS



FOUR SEASONS YACHTS

ACCOMMODATIONS | DECK PLANS





FOUR SEASONS

YACHTS

For more information, please visit
www.fourseasonsyachts.com/groups-and-charters
or email us at **Events@FourSeasonsYachts.com**

All information, including suite configurations, floor plans, and features depicted in artistic renderings are for illustrative purposes only and subject to change without notice.

Please note that our published itineraries for ports of call, Marina Day operations, and Beach Day operations may change for safety, regulatory, or other operational reasons at the discretion of the captain.